

**B.Sc Semester III (CBCS) General Practical Examination, 2020**

**Subject: Zoology**

**Paper: ZOOG-CC-3-3-P; PHYSIOLOGY AND BIOCHEMISTRY LAB**

**LINK FOR GOOGLE FORM SUBMISSION**

**<https://forms.gle/2JHSernKtwKAj1PPA>**

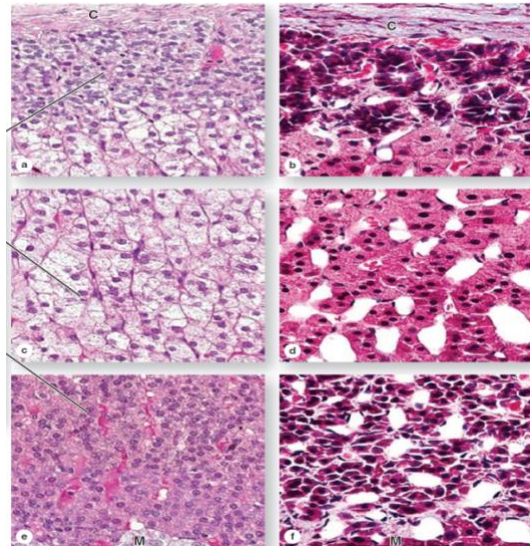
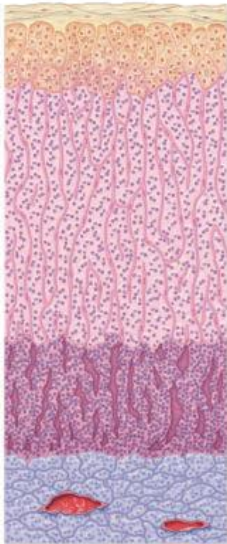
**Full Marks = 30**

*The figures in the margin indicate full marks.*

*Candidates are required to give their answers in their own words  
as far as practicable.*

1. Identify the following slides A – C with reasons.

(3 × 4 = 12)



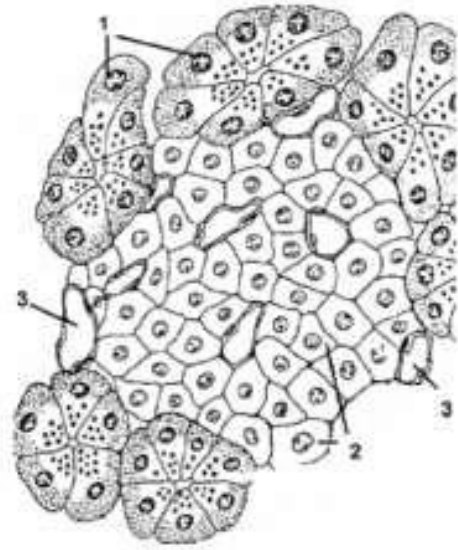
---

Slide A

i) Low magnification

ii) High magnification

---



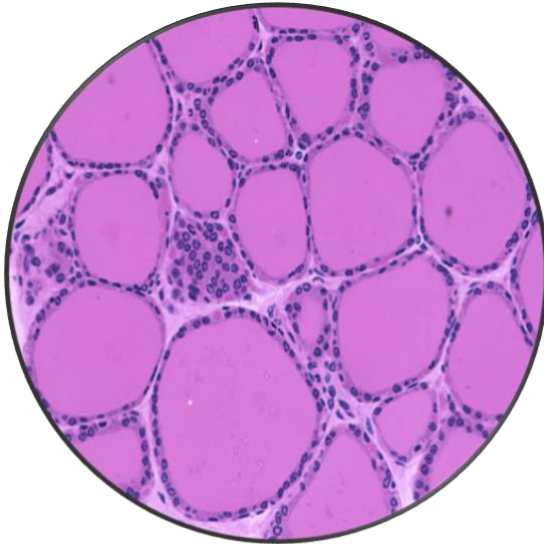
---

Slide B

i) Low magnification

ii) High magnification

---



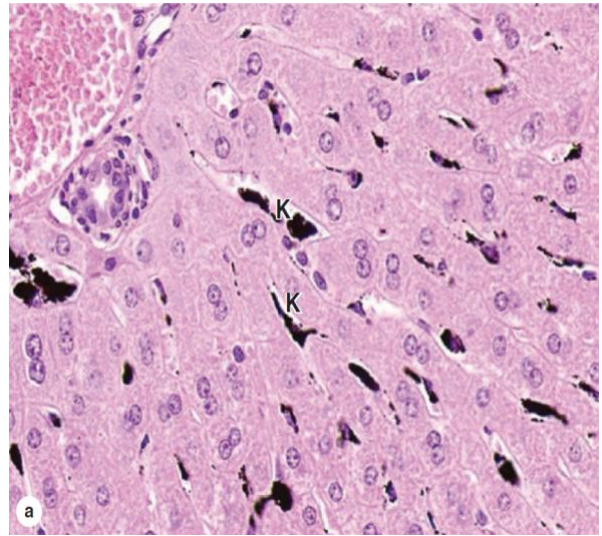
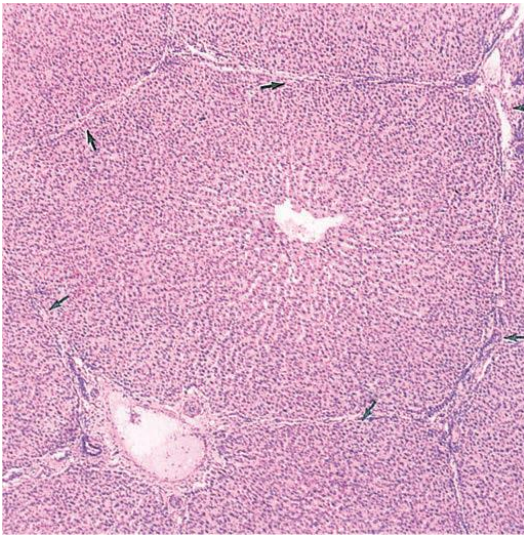


Slide Ci) Low magnification

ii) High magnification

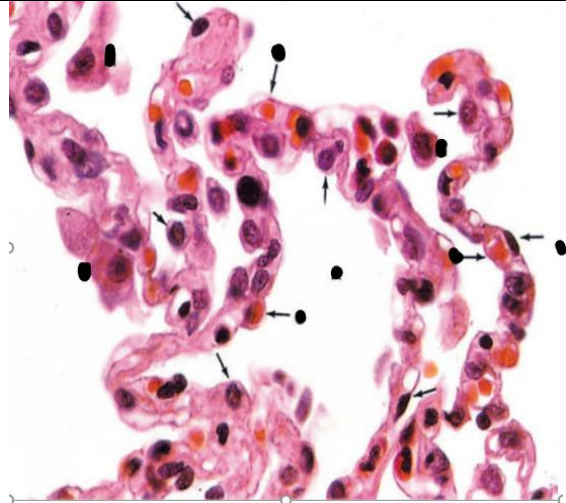
2. Identify the following slides A – C with reasons.

(3 × 4 = 12)



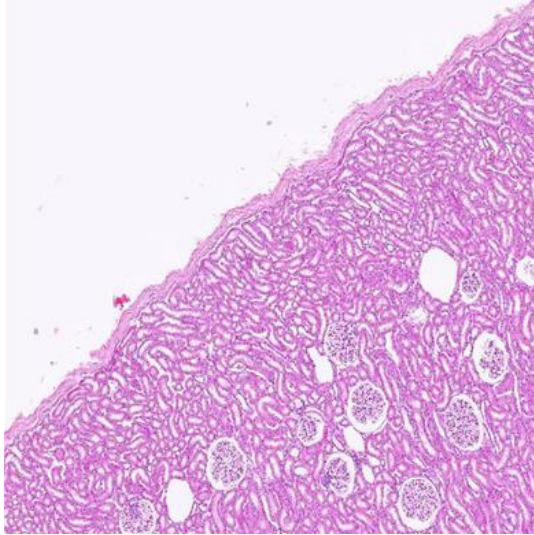
Slide A i) Low magnification

ii) High magnification



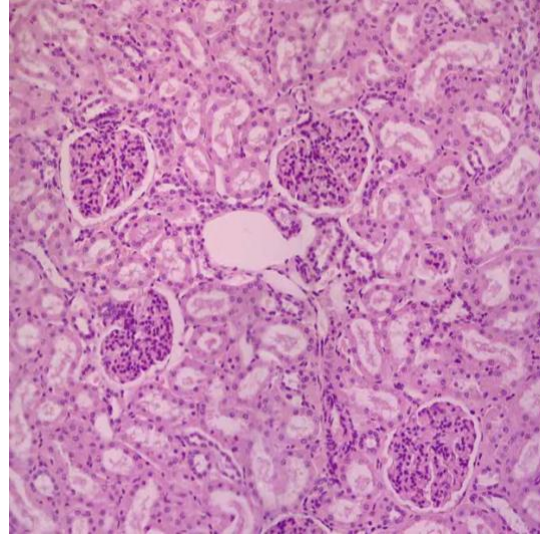
Slide B i) Low magnification

ii) High magnification



---

Slide Ci) Low magnification



---

ii) High magnification

---

3. You are provided with an unknown sample. Using suitable biochemical tests identify whether the sample provided is a monosaccharide or a polysaccharide.

6 marks